



Detail | Schwanke, Untitled. 1985. Gouache ink painting on cardboard. 69.8x49.9cm.

# SCHWANKE

## SONETOS

Detail | Schwanke, Untitled. 1985. Gouache ink painting on cardboard. 69.8x49.9cm.





Exposição

# SCHWANKE: Sonetos

Curadoria

*Maria Amélia Bulhões*

Curadoria educativa

*Alena Marmo, Leticia Mognol e Nadja Lamas*

**Até 25 de fevereiro de 2022**

Segunda a sexta, 10h às 16h

Galeria Municipal de Arte Victor Kursancew

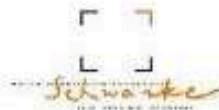
Casa da Cultura Fausto Rocha Júnior

Rua Dona Francisca, nº 800, bairro Saguazu, Joinville (SC)

Tel.: (47) 3433-2557

Realização:

Federia Municipal de Arte  
*Pietro Kursancew*



Apoio Cultural:



Secretaria de  
Cultura e Turismo



Design: Fernanda Pozza da Costa

# EDUCATIONAL MATERIAL CONTENT

04

---

Texts from the Technical  
Team 06 - Schwanke Quote

07

---

Exhibition Setup

10

---

The Exhibition and Its  
Works

26

---

Project Actions

31

---

The Sonnet

33

---

Supporting Resources

35

---

The Artist

37

---

Exhibition Credits  
Victor Kursancew Municipal Art Gallery



# “SCHWANKE PROGRAM: DESTAQUE”

"Schwanke: Sonetos" is an exhibition including works by Victor Kursancew Municipal Art Gallery and Luiz Henrique Schwanke Museum of Contemporary Art (MAC Schwanke).

The Municipal System for Development through Culture (Simdec) authorized the project, which includes an educational curatorship, a catalog on the three editions of the "Schwanke: Destaque" program, and teacher-support materials. Maria Amélia Bulhões, a researcher, is the curator.

"Schwanke: Destaque" is a 2018 MAC Schwanke move that allows for continuous access and improves collecting. A researcher, curator, or art critic is invited to enter the technical reserve at each annual edition and propose a selection of works in light of a fresh viewpoint and idea in order to highlight something special that can spark a conversation about a poetics artist, art history, or contemporary context.

A synopsis of the "Schwanke: Destaque" program

Dalva Alcântara's study, which she used to analyze Schwanke's artist book for her master's thesis on Cultural Heritage and Society, focused on the project's initial iteration. The Juarez Machado Institute is hosting the 2018 exhibition "Artist's Book, A Hybrid by Schwanke," which has a creative studio where educational activities are conducted in conjunction with schools.

Maria José Justino, an art critic and lecturer, organized the show "A Expressão Reta Não Sonha: os Revaneios de Schwanke," which took place at the Juarez Machado Institute in 2019 for the second iteration. The chosen part has an exceptional piece, the green mandala, as well as a series of paintings and appropriations, including the sculpture of white basins that is now housed at the Oscar Niemeyer Museum in Curitiba (PR) and the profiles (tongues).

Text: Néri Pedroso, press office



Foto: Rogério Silva, SECOM.

# SCHWANKE: SONETOS

SCHWANKE: DESTAQUE | 3rd EDITION

CURATOR | MARIA AMÉLIA BULHÕES

The Sonetos series resumes a traditional style of poetry and gives it a modern arrangement, highlighting the creative relationship between literature and visual arts.

The artist spent six years developing this series of pieces, which has 14 lines divided into two groups of four verses and two of three verses. The repetition of the pattern is evident in all of these pieces. A visual poetic record that opens up a world of possibilities while articulating several creative trends like pop art, arte povera, and concrete poetry with a consistent theme. In order to produce a collection of related pieces, the artist emphasizes experimentation with text, drawing, painting, and graphic media (such as magazine pages and decals).

These approaches are notable for their creative audacity that emphasizes a variety of materials while also reinforcing painting as a medium of expression.

The uniqueness and intricacy of this series make it a significant turning point in the development of his poetics, adding to our knowledge of the career path of this remarkable creator.

Text: Maria Amélia Bulhões - artistic curator.

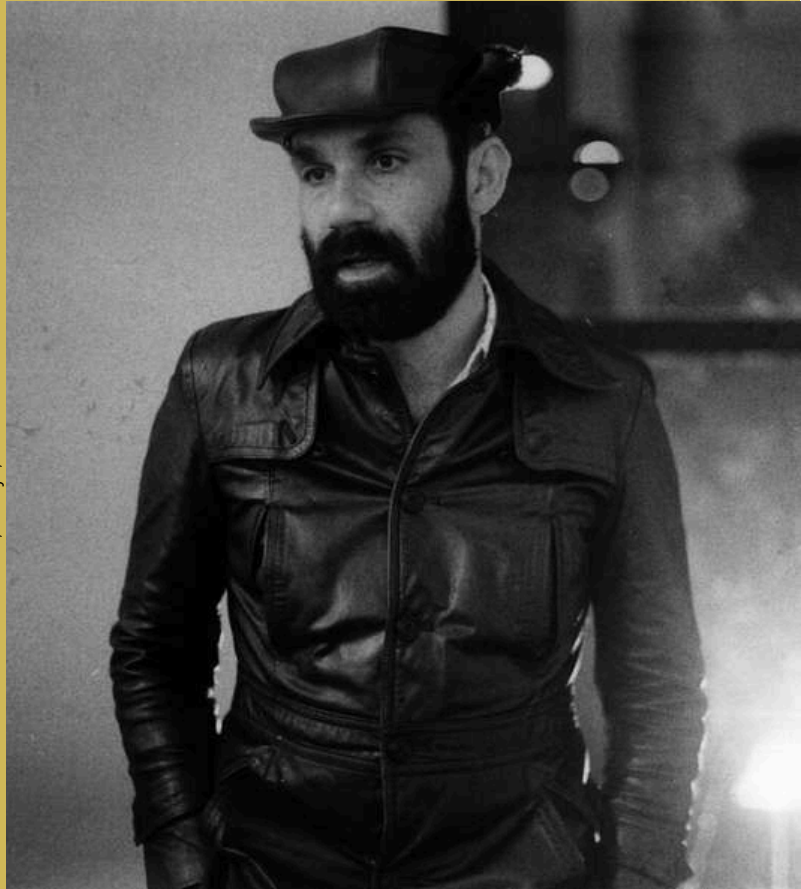
Foto: Rogério Silva, SECOM.



# SCHWANKE

## QUOTE

Schwanke na Bienal de SP. Foto: Paulo, Araujo, 1991



"The work of art is at the level of proof - Proof is existence - the fact of being is inexorable - there is no need to explain or have an objective because definitively and fundamentally - it is - and what it is does not require meaning or demonstration of object, meaning and why."

(reading Susan Sontag, Against Interpretation)

Handwritten text by the artist on the back of a postcard from the Joinville Art Museum, no date.



# EXHIBITION SETUP SCHWANKE | SONETOS



## **GMAVK AND MAC SCHWANKE TEAM IN SETUP PROCESS**

**The setup took place between the 9th and 11th of November, carried out by the coordinator of GMAVK, Franzoi, the mediation team of Soraia Silva and Isadora Terranova and the MAC Schwanke team: curator Maria Amélia Bulhões, educational curators Alena Rizi Marmo Jahn and Letícia Mognol, and with the support of art educator and visual artist Márcio Paloschi.**

*Photos: GMAVK team.*

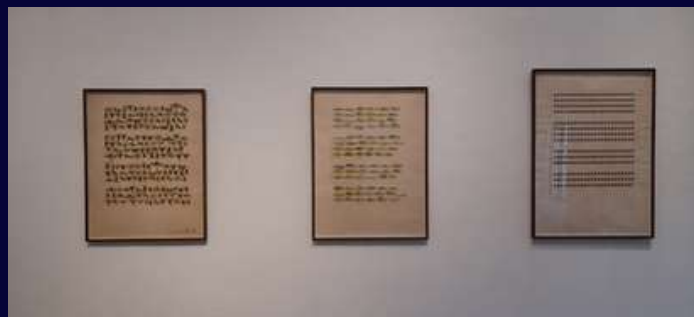
# EXHIBITION SCHWANKE | SONETOS



**VICTOR KURSACEW MUNICIPAL ART  
GALLERY**

*Unit of the Department of Culture and  
Tourism, attached to the Fausto Rocha  
Júnior House of Culture.*





# EXHIBITION WORKS

## SCHWANKE | SONETOS

### 3 SONNETS AS PAINTING

Untitled. 1985. Gouache ink painting on cardboard. 69.7x45.5cm.

Untitled. 1985. Gouache ink painting on cardboard. 70.1x46cm.

Untitled. 1985. Gouache ink painting on cardboard. 69.8x49.9cm.





Untitled. 1985  
Gouache ink painting on cardboard  
69.7x45.5cm





Untitled. 1985  
Gouache ink painting on cardboard  
70.1x46cm

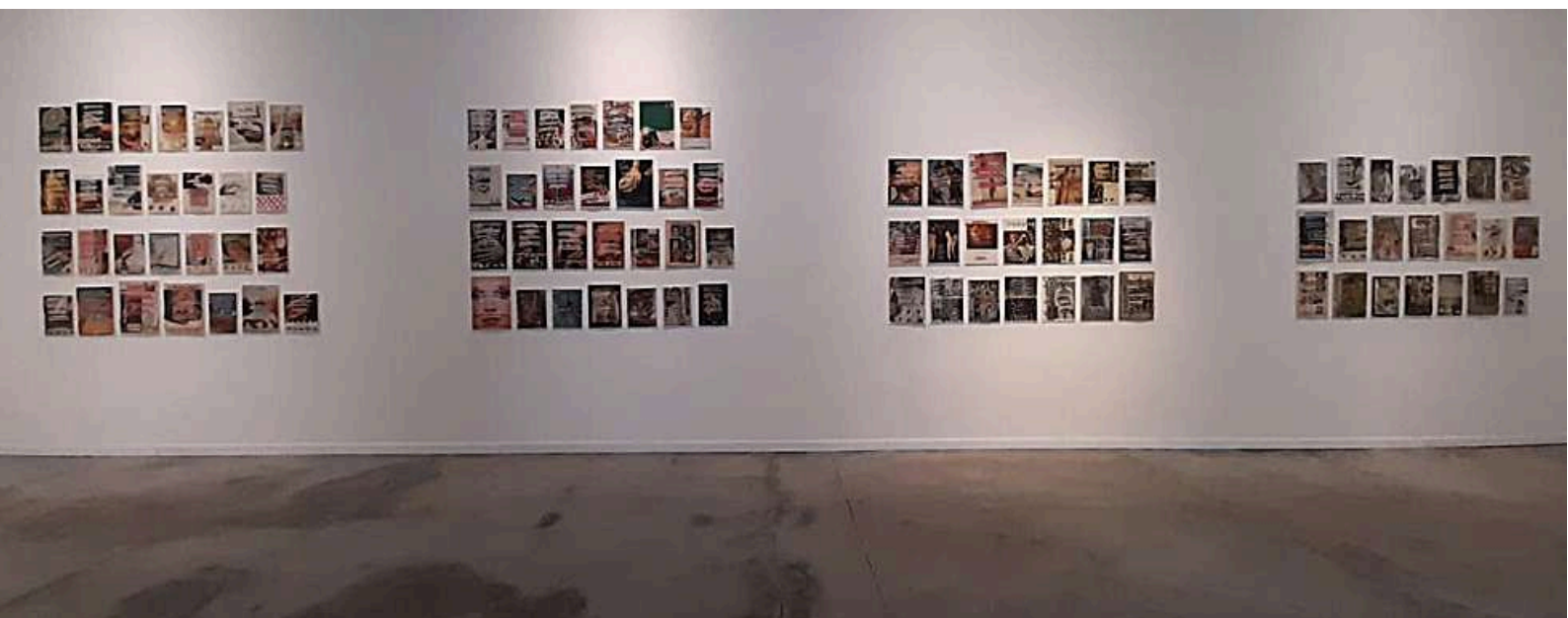


Untitled. 1985  
Gouache ink painting on cardboard  
69.8x49.9cm

# EXHIBITION WORKS SCHWANKE | SONETOS

98 PAINTING OF SONNETS ON ADVERTISING IMAGES

98 Paintings on magazine pages, untitled, of different sizes.



*Concepção expográfica da Curadora Maria Amélia Bulhões*





## 2nd stanza



*Expographic design by Curator Maria Amélia Bulhões*

PAINTING OF SONNETS ON ADVERTISING IMAGES



# 3rd stanza



*Expographic design by Curator Maria Amélia Bulhões*

PAINTING OF SONNETS ON ADVERTISING IMAGES



# 4th stanza



Expographic design by Curator Maria Amélia Bulhões

PAINTING OF SONNETS ON ADVERTISING IMAGES



Untitled. 1985  
 Painting on magazine pages  
 24.5 X 21cm



Untitled. 1985  
 Painting on magazine pages 33  
 X 24cm



Untitled. 1985  
 Painting on magazine pages 27  
 X 20cm

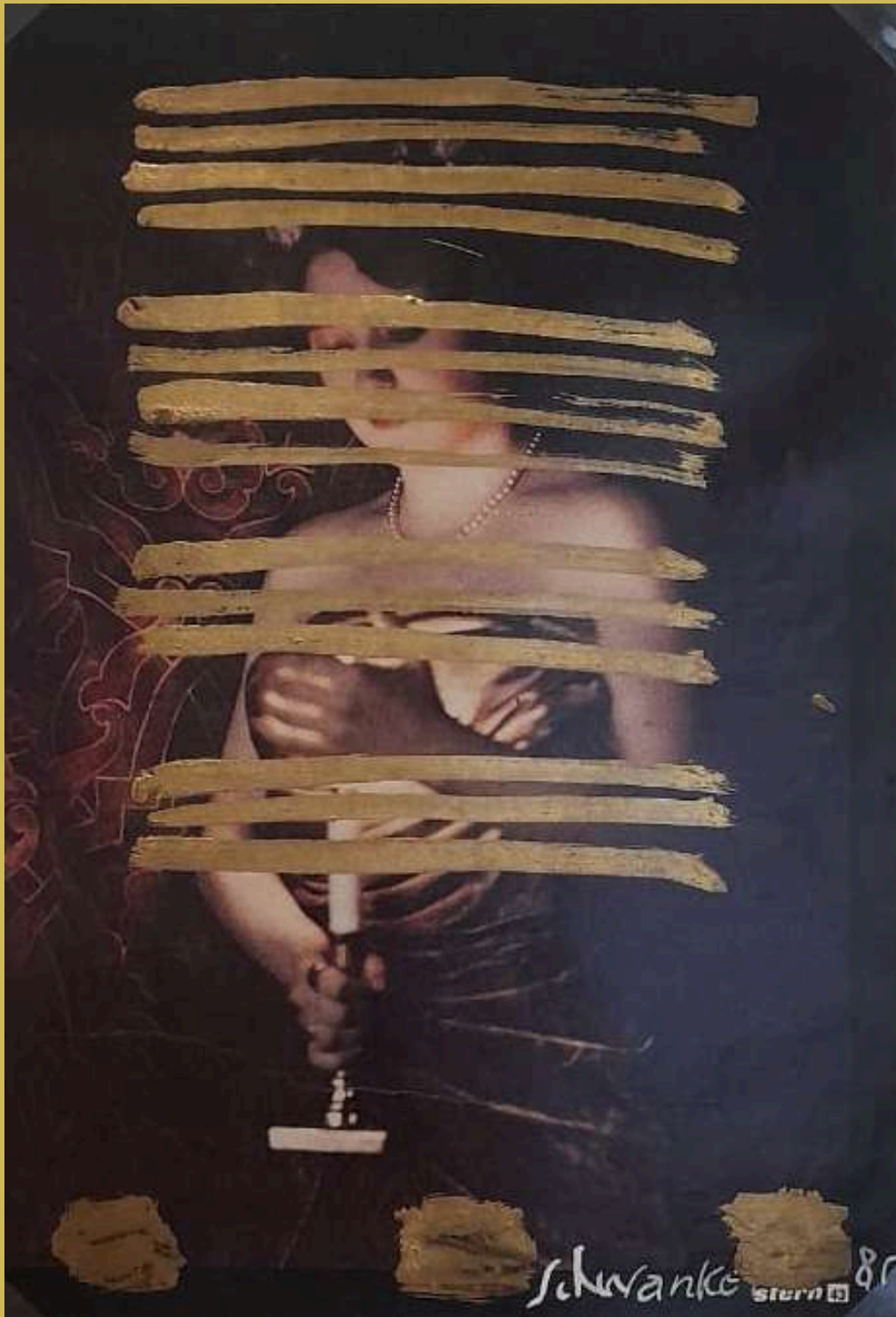


Untitled. 1985  
 Painting on magazine pages  
 29.5 X 20cm

PAINTING OF SONNETS ON ADVERTISING IMAGES | APPROXIMATE IMAGE OF WORKS

The video "Inventário" which contains a record of all the images of Schwanke's Sonnets works is available on Samuel Kuhn's channel and its link is in the Support Resources of this educational material, on page 34.





Untitled. 1985  
Painting on magazine pages  
29.5 X 21cm

#### PAINTING OF SONNETS ON ADVERTISING IMAGES | APPROXIMATE WORK IMAGE

*The video "Inventário" which contains a record of all the images of Schwanke's Sonnets works is available on Samuel Kuhn's channel and its link is in the Support Resources of this educational material, on page 34.*





Untitled. 1985  
 Painting on magazine pages 31  
 X 22cm



Untitled. 1985  
 Painting on magazine pages  
 29.5 X 21.5cm



Untitled. 1985  
 Painting on magazine pages 30  
 X 23cm



Untitled. 1985  
 Painting on magazine pages 28  
 X 21cm

PAINTING OF SONNETS ON ADVERTISING IMAGES | APPROXIMATE IMAGE OF WORKS

The video "Inventário" which contains a record of all the images of Schwanke's Sonnets works is available on Samuel Kuhn's channel and its link is in the Support Resources of this educational material, on page 34.

# EXHIBITION WORKS

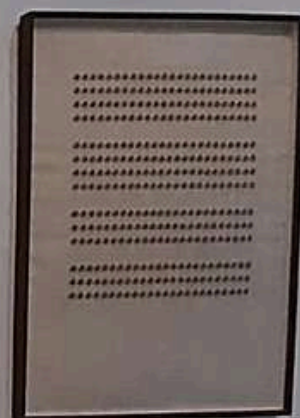
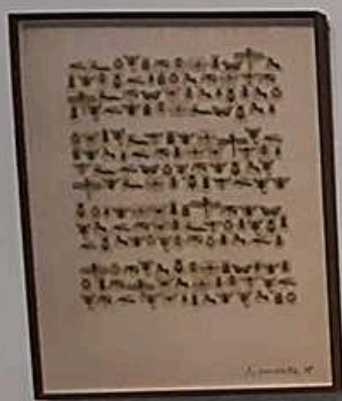
## SCHWANKE | SONETOS

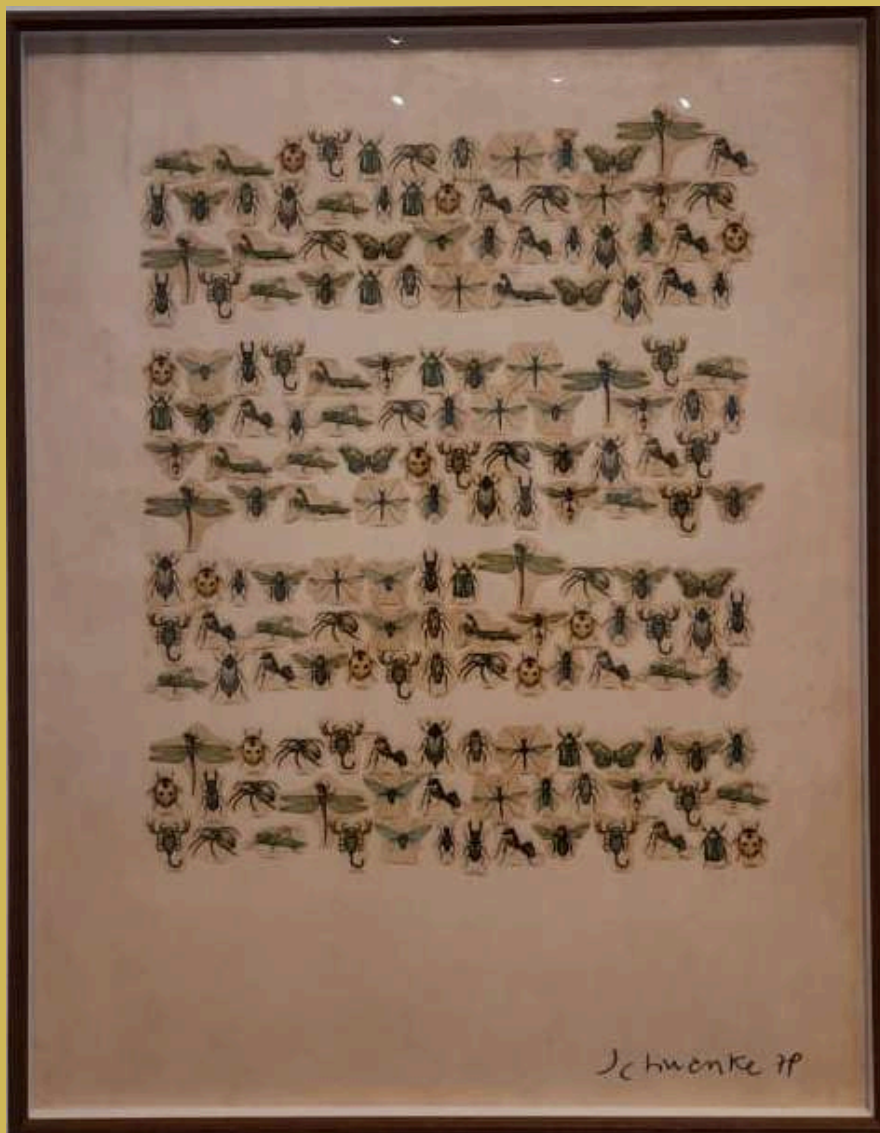
### 3 SONNETS ON DECALCOMANIA

Untitled.1979. Decal |insects| on paper. 89.8 x 69.5cm.

Untitled.1979. Decal |fish| on paper. 91 x 69cm.

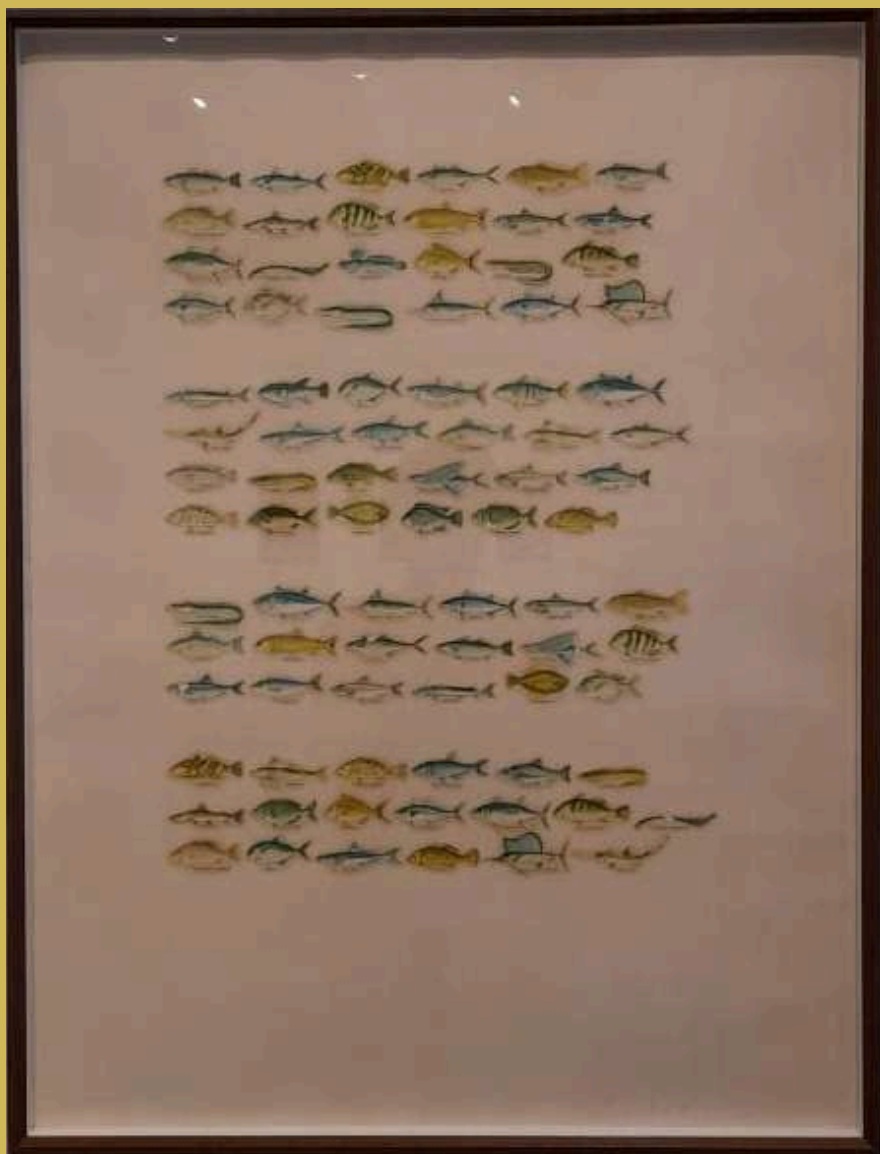
Untitled.1979. Decal |flowers| on paper. 101 x 71cm.



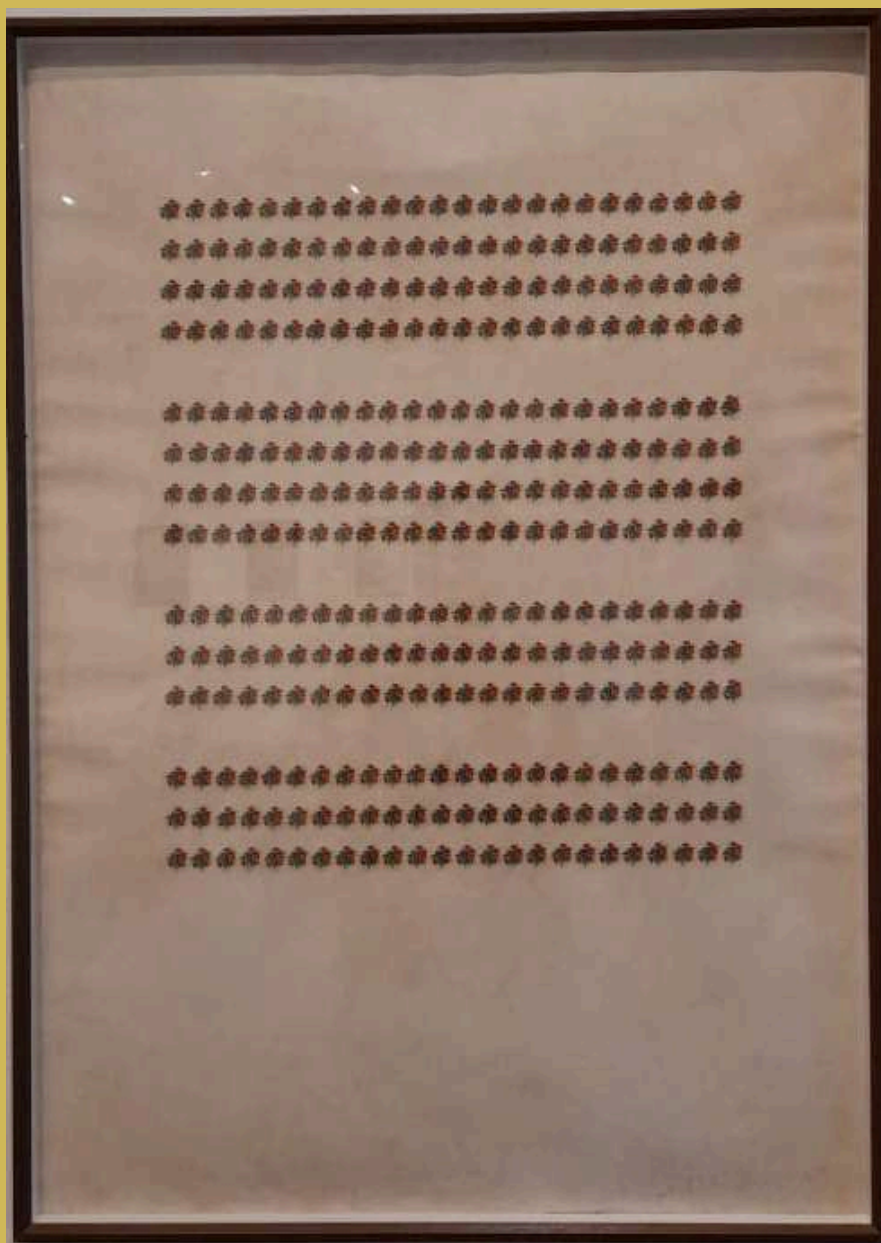


Untitled.1979  
Decal on paper | insects 89.8 x  
69.5cm





Untitled.1979  
Decal on paper | fish 91 x 69cm



Untitled.1979  
Decal on paper | flowers 101  
x 71cm

# EVENTS

## OPENING | TALK WITH THE CURATOR Maria Amélia Bulhões



Design: Fernanda Pozza da Costa



TALK TOOK PLACE IN THE AUDITORIUM OF CASA DA CULTURA AND PRECEDED THE OPENING OF THE EXHIBITION ON NOVEMBER 11, 2021

Photos: Daniel Machado  
Instagram @mac.schwanke GMAVK Team



# EVENTS

## EDUCATIONAL CURATORY

Alena Marmo | Letícia Mognol | Nadja Iamas



EDUCATIONAL EVENT DEVELOPED AT GMAVK IN PARTNERSHIP WITH THE SCHWANKE INSTITUTE.

*IN THE PROPOSAL DURING THE EXHIBITION PERIOD, VISITORS ARE INVITED TO EXPRESS THEMSELVES WITH DIFFERENT MATERIALS THROUGH OBSERVATION OF SCHWANKE'S WORKS.*

*Fotos: Equipe GMAVK.*

# EVENTS

## EDUCATIONAL CURATORRY

Alena Marmo | Letícia Mognol | Nadja Iamas



**SCHWANKE:**  
Sonetos Visuais

Curso para professores  
Ministrantes: Alena Marmo e Letícia Mognol

15 de dezembro de 2021

8h às 11h: Schwanke: trajetória e produção de arte	Galeria de Arte Victor Kussanow Casa Da Cultura Fausto Rocha Junior Rua Dona Francisca, 800 - Saguajú Joinville/SC
13h30 às 16h: Experimentos poéticos com sonetos visuais no contexto da escola	Os participantes recebem um material de apoio. Observação: trazer revistas

Realização: Apoio Cultural:

Design: Fernanda Pozza da Costa

EDUCATIONAL EVENT  
DEVELOPED AT GMAVK IN  
PARTNERSHIP WITH THE  
SCHWANKE INSTITUTE.

EVENT TAKEN PLACE ON FEBRUARY 14,  
2022.

TRAINING COURSE FOR EDUCATORS  
ABOUT THE LIFE AND WORK OF  
SCHWANKE.

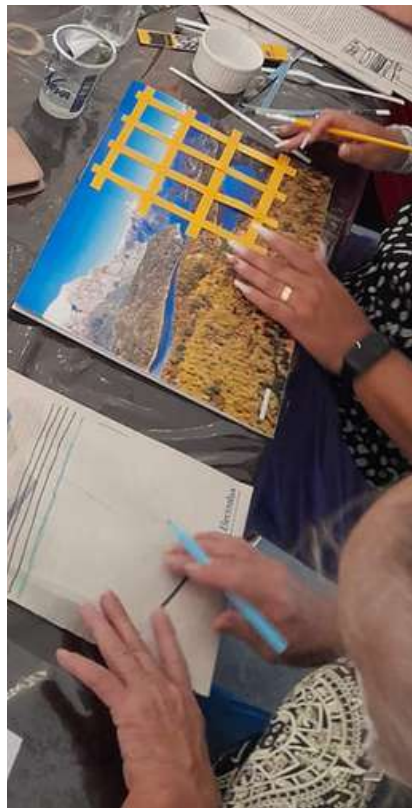
Photos: GMAVK Team.



# EVENTS

## EDUCATIONAL CURATORY

Alena Marmo | Letícia Mognol | Nadja Lamas



EDUCATIONAL ACTION DEVELOPED AT GMAVK IN PARTNERSHIP WITH THE SCHWANKE INSTITUTE.

ACTION TAKEN PLACE ON FEBRUARY 14, 2022.

TRAINING COURSE FOR EDUCATORS ABOUT THE LIFE AND WORK OF SCHWANKE.

Photos: GMAVK Team.



# EVENTS

## EDUCATIONAL CURATORY

Alena Marmo | Letícia Mognol | Nadja Lamas



EDUCATIONAL EVENT DEVELOPED AT GMAVK IN PARTNERSHIP WITH THE SCHWANKE INSTITUTE.

LAUNCH AND DELIVERY OF THE "EDUCATIONAL MATERIAL TO SUPPORT TEACHERS" TO EDUCATORS PARTICIPATING IN THE COURSE ON FEBRUARY 14, 2022.

Photos: GMAVK Team.

## SONETO DA FIDELIDADE

De tudo, ao meu amor serei atento  
Antes, e com tal zelo, e sempre, e tanto  
Que mesmo em face do maior encanto  
Dele se encante mais meu pensamento.

Quero vivê-lo em cada vão momento  
E em louvor hei de espalhar meu canto  
E rir meu riso e derramar meu pranto  
Ao seu pesar ou seu contentamento.

E assim, quando mais tarde me procure  
Quem sabe a morte, angústia de quem vive  
Quem sabe a solidão, fim de quem ama

Eu possa me dizer do amor (que tive):  
Que não seja imortal, posto que é chama  
Mas que seja infinito enquanto dure.

*(Vinícius de Moraes)*

Vinícius de Moraes, 1946

# O SONETO

# The Literary Sonnet

The sonnet is a literary, lyrical genre with a set structure that is traditionally consisting of two quartets and two tercets. Before the press was invented, it was intended to manifest emotion through the act of declamation and listening, rather than be read.

The Italian sonnet maintains a constant form; the theme is introduced in the first verse, thoughts are developed in the following verses, and the meaning of the sonnet is revealed in the final tercet. In Portuguese-language literature it found some representatives, including Augusto dos Anjos, Cruz e Souza, Luiz Vaz de Camões, Olavo Bilac, among others.

## Schwanke's Sonnets

- He suppresses the verbal text, but maintains the structure with verses.
- He thinks about support (space).
- He reconstructs textuality with shapes and images.
- He writes poems with images.

**Source: MAC Schwanke Educational Curatorial Team**  
*Alena Rizi Marmo Jahn, Letícia Mognol, Nadja de Carvalho Lamas*



# SUPPORT RESOURCES

SCHWANKE | VISUAL SONNETS



## **MARIA AMÉLIA BULHÕES**

*Curator - Professor of history, theory and art criticism, Federal University of Rio Grande do Sul - UFRGS*

ACCESS USING THE  
QR CODE BELOW



OR ACCESS:

[LINKTR.EE/MARIAMELIABULHOES](https://linktr.ee/mariameliabulhoes)

ON YOUR BROWSER

ACCESS USING THE  
QR CODE BELOW



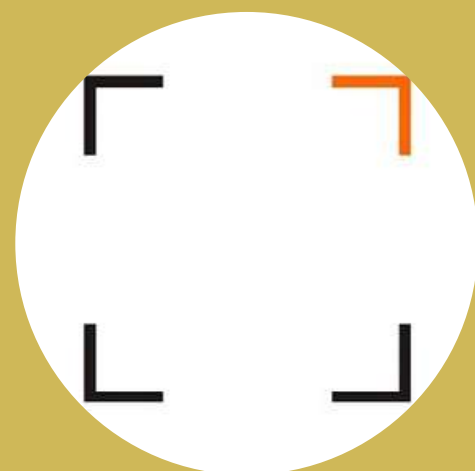
## **MAC SCHUANKE YOUTUBE CHANNEL**

*Access the Video Material about the life and work of Luiz Henrique Schwanke*

OR ACCESS:

[YOUTUBE.COM/@INSTITUTOLUIZHENRIQUESCHWA3066](https://www.youtube.com/@INSTITUTOLUIZHENRIQUESCHWA3066)

ON YOUR BROWSER



*For further information click on:*

[www.schwanke.org.br/plataformaeducativa/](https://www.schwanke.org.br/plataformaeducativa/)

# SUPPORT RESOURCES

## SCHWANKE | VISUAL SONNETS



### **VIDEO - INVENTORY**

*Music by Ricardo Ledoux, composer/singer, cultural producer. The song "Distante Semblante" was composed based on Schwanke's work "A Casa Tomada por Desenhos que Não deram Certo" and the short story "A Casa Tomada" by Julio Cortazár*

*The video recording all the images from Schwanke's Sonnets works is on Samuel Kuhn's channel*

ACCESS USING THE  
QR CODE BELOW



OR ACCESS:

[YOUTUBE.COM/WATCH?V=8IPM8JSFAU4](https://www.youtube.com/watch?v=8IPM8JSFAU4)

ON YOUR BROWSER

ACCESS USING THE  
QR CODE BELOW



OR ACCESS:

[YOUTUBE.COM/WATCH?V=HWAB6XXTETI](https://www.youtube.com/watch?v=HWAB6XXTETI)

ON YOUR BROWSER

### **TAIZA MARA R. MORAES**

*Taiza Mara Rauen Moraes, who has a master's and doctorate in Literary Theory from UFSC. She coordinates the Joinville nucleus of the National Reading Incentive Program (PROLER), where she develops numerous projects for the external community.*

*In this video she talks about Concrete Poem, one of the relationships between Schwanke's visual sonnets.*



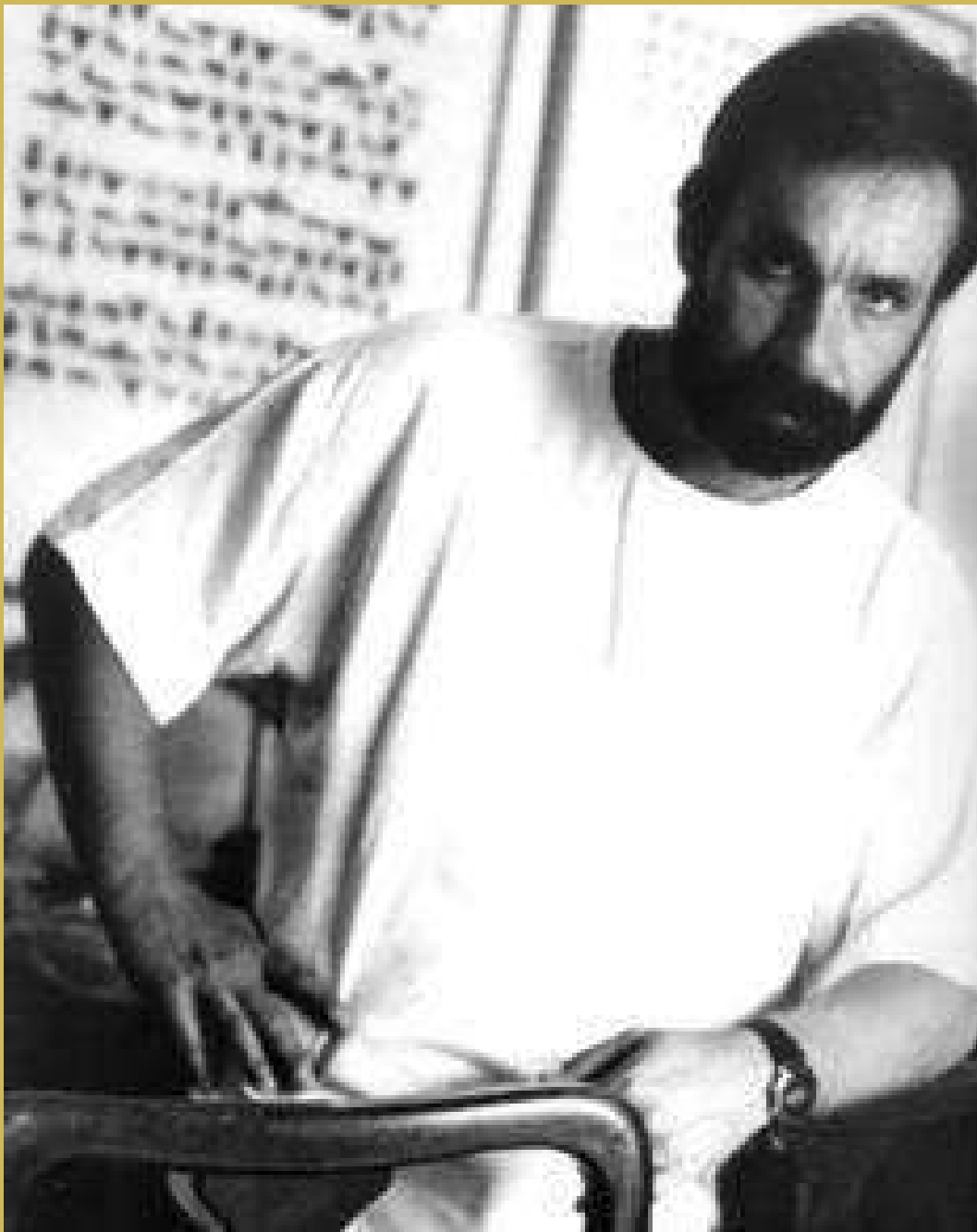


Photo: Photo reproduction by Paulo Araújo - Book "Schwanke: Traços"

# THE ARTIST



# Luiz Henrique Shwanke

He was born on June 15, 1951 and died on May 27, 1992. He was the author of an extensive and intense production, totaling a set of works that to this day could not be accounted for in its entirety, as it is spread across museums and collections private individuals, totaling more than five thousand pieces. In visual arts alone, there are drawings, paintings, sculptures, collages, objects and installations, which highlights the versatility of his artistic behavior, as well as the breadth of his plastic research. However, despite experiencing countless different languages and techniques, it can be said that his different series of work dialogue with each other through, mainly, three guiding threads: light, gesture and the appropriation of art history, based on discussions of varied historical moments, fruits of the unfolding of classical thought. He participated in numerous exhibitions, both solo and group, he was the most awarded artist in Brazil in 1985 (according to Revista Veja in 1986), and participated in the 21st São Paulo International Biennial (1991). Posthumously, given his importance for the history of national art, as well as the recognition of specialized critics, he participated in numerous important exhibitions, among which are the "Bienal Brasil século XX" (Fundação Bienal de São Paulo, Parque Ibirapuera, São Paulo, 1994), "Vida Schwanke Vivo" (Museu de Arte de Santa Catarina, Florianópolis, 1994), "Imagética" (Moinho Novo Rebouças, Curitiba, 2003), "Dor, Forma e Beleza" (Estação Pinacoteca, São Paulo, 2005), "80/90 Modernos e PósModernos etc." (Instituto Tomie Ohtake, São Paulo, 2007), "Anos 70, Arte como Questão" (Instituto Tomie Ohtake, 2008), "O Estado da Arte, 40 Anos de Arte Contemporânea no Paraná"(Museu Oscar Niemeyer, Curitiba, 2010), "O Artista e a Bola" (Oca, Museu da Cidade, São Paulo e Cidade das Artes, Rio de Janeiro, 2014), "Schwanke, habitar os Incorporais"(Fundação Cultural BADESC - Florianópolis, 2016).

# EXHIBITION CREDITS

## “Schwanke: Sonetos” Exhibition

### **Luiz Henrique Schwanke Institute**

Maria Regina Schwanke – Presidente

### **Curatorship**

Maria Amélia Bulhões

Educational curatorship

Alena Marmo | Leticia Mognol | Nadja Lamas

Photos

Daniel Machado

Designer

Fernanda Pozza da Costa

Press office

Néri Pedroso

## DEPARTMENT OF CULTURE AND TOURISM

Secretary

Guilherme Gassenferth

Executive Board

Francine Olsen

Communication Coordinator

Emanuelle Torres

SECOM photos

Rogério da Silva

Visual Design Educational Material GMAVK

Franzoi | Soraia Silva | Isadora Terranova



Detail | Schwanke, *Untitled*. 1985. Gouache ink painting on cardboard. 69.8x49.9cm.

CASA DA CULTURA FAUSTO ROCHA JUNIOR  
GALERIA MUNICIPAL DE ARTE VICTOR KURSANCEW

<b>CASA DA CULTURA MANAGER</b>	FRANZOI
<b>GMAVK COORDINATOR</b>	FRANZOI
<b>GMAVK CULTURAL MEDIATION</b>	SORAIA SILVA
<b>GMAVK ADMINISTRATIVE SECTOR</b>	ISADORA TERRANOVA